



"innovation in its most functional form"

## PRODUCT DATA SHEET

# SG13TE

## SERURE-GRIP HYDRAULIC FLANGE SPREADER

**SPREADING FORCE:**  
 10,000 psi (700 bar) = 13 T (130 kN) per tool  
 It is recommended that tools are used in pairs giving  
 2 x 13 = 26 T (260 kN)

**SPREADING DISTANCE = 0-115mm (0-4.53")**  
**TOOL WEIGHT = 21.5kg (47.3 lbs)**

### KIT COMPONENTS

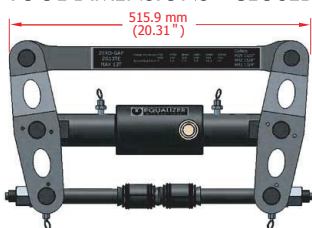
- 1 x SG13TE Tool c/w Hydraulic Cylinder
  - 1 x 10,000 psi (700 bar) HP550S Sealed Hand Pump with Gauge
  - 1 x 10,000 psi (700 bar) Hydraulic Hose, 2m (78.75")
  - 1 x 150mm (6") Vernier Calliper
  - 1 x Tommy Bar
  - 1 x 30mm (1 1/8") Drive Socket
  - 1 x Safety Block
  - 2 x M39 (1 1/2") Collets
  - 2 x M42 (1 5/8") Collets
  - 2 x M45 (1 3/4") Collets
  - 1 x Instruction Manual
  - 1 x Carry Case with protective foam inserts
- Product Code: SG13TESTD



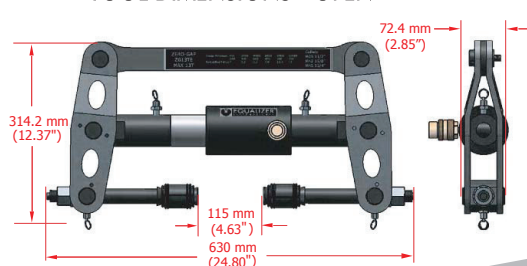
### WEIGHTS AND DIMENSIONS

Tool Weight	= 21.5 kg (47.3 lbs)	Carry Case Dimensions:
Case Weight	= 9 kg (19.8 lbs)	890 x 570 x 165mm (35.04" x 22.44" x 6.50")
Gross Weight	= 40.5 kg (89.2 lbs)	

TOOL DIMENSIONS - CLOSED



TOOL DIMENSIONS - OPEN



info@equalizerinternational.com  
 www.equalizerinternational.com

# SG13TE

SECURE-GRIP HYDRAULIC FLANGE SPREADER



"innovation in its most functional form"

## RANGE OF APPLICATION

The SG13TE is usable on all standard flanges that have been specified to accept the following bolt sizes:

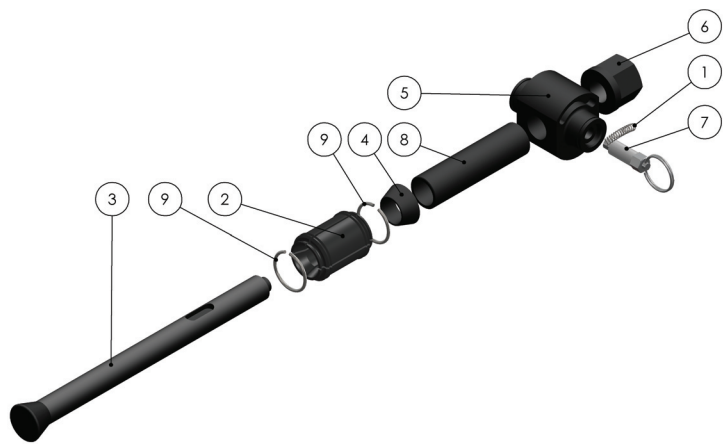
M39, M42, M45, 1 1/2", 1 5/8", 1 3/4"

This includes ANSI, DIN, SPO, ASME, API and BS flanges.

For a detailed range of application please request the Secure-Grip Hydraulic Operator Instruction Manual.

## COLLET HEAD PARTS LIST AND EXPLODED DRAWING

ITEM	DESCRIPTION	PART NO.	QUANTITY
01	CENTERING SPRING	402201-01	01 each
02	M39 COLLET	640101-01	01 each
	M42 COLLET	640201-01	01 each
	M45 COLLET	640301-01	01 each
03	COLLET HOLDER	640401-01	01 each
04	DRIVE CONE	640501-01	01 each
05	COLLET UNION	640601-01	01 each
06	COLLAR NUT	640901-01	01 each
07	M12 PLUNGER	641001-01	01 each
08	DRIVE TUBE	641601-01	01 each
09	M39 SPRING RING	642201-01	02 each
	M42 SPRING RING	642401-01	02 each
	M45 SPRING RING	642601-01	02 each



## SG13TE PARTS LIST AND EXPLODED DRAWING

ITEM	DESCRIPTION	PART NO.	QUANTITY
01	POP RIVET	020706-01	02 each
02	READ INSTR. STICKER	070001-01	01 each
03	EQUALIZER LOGO	070045-01	02 each
04	CANTILIVER STICKER	070129-01	01 each
05	SPLIT RING	403102-01	01 each
06	LEG W/O PIN	641101-01	02 each
07	LEG WITH PIN	641101-02	02 each
08	SPIROL RING	641301-01	10 each
09	ACTUATOR PIN	641401-01	02 each
10	CANTILEVER	641501-01	01 each
11	PULL PIN	641701-01	01 each
12	M8 BALL PLUNGER	641801-01	01 each
13	ACTUATOR UNION	641901-01	02 each
14	CANTILIVER PIN	643201-01	01 each
15	SERIAL PLATE	643501-01	01 each
16	ACTUATOR ASSEMBLY	644001-01	01 each
17	PULL PIN M10	900502-01	02 each
18	COLLET HOLDER ASS.		

